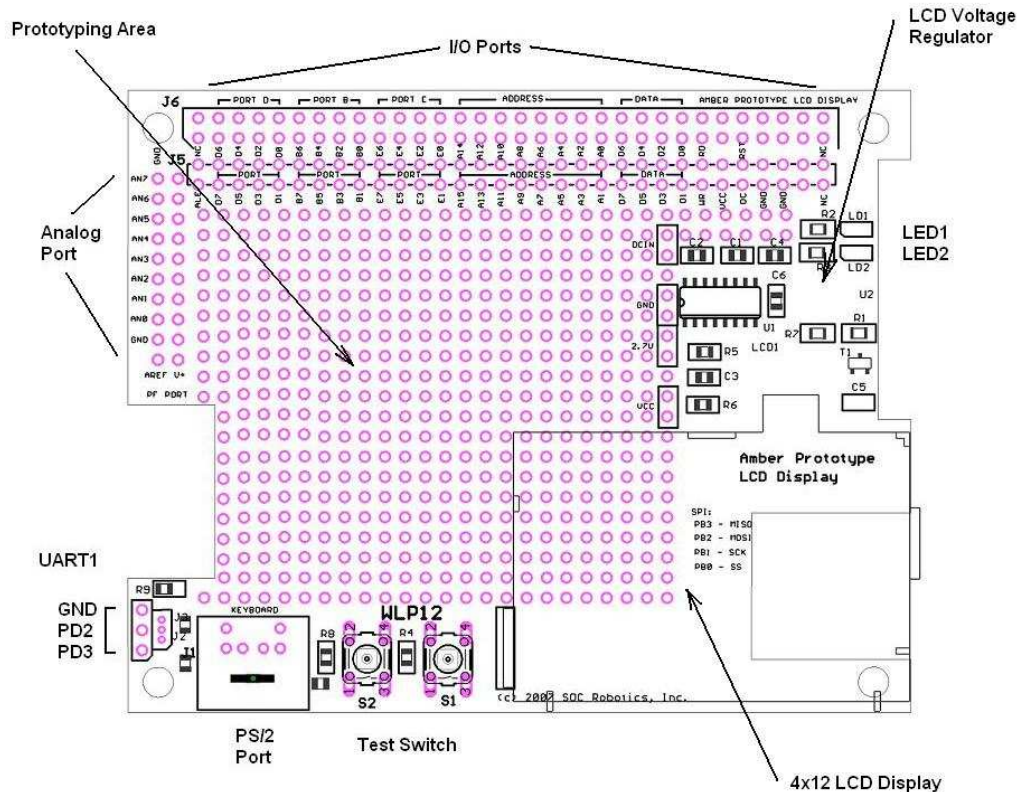
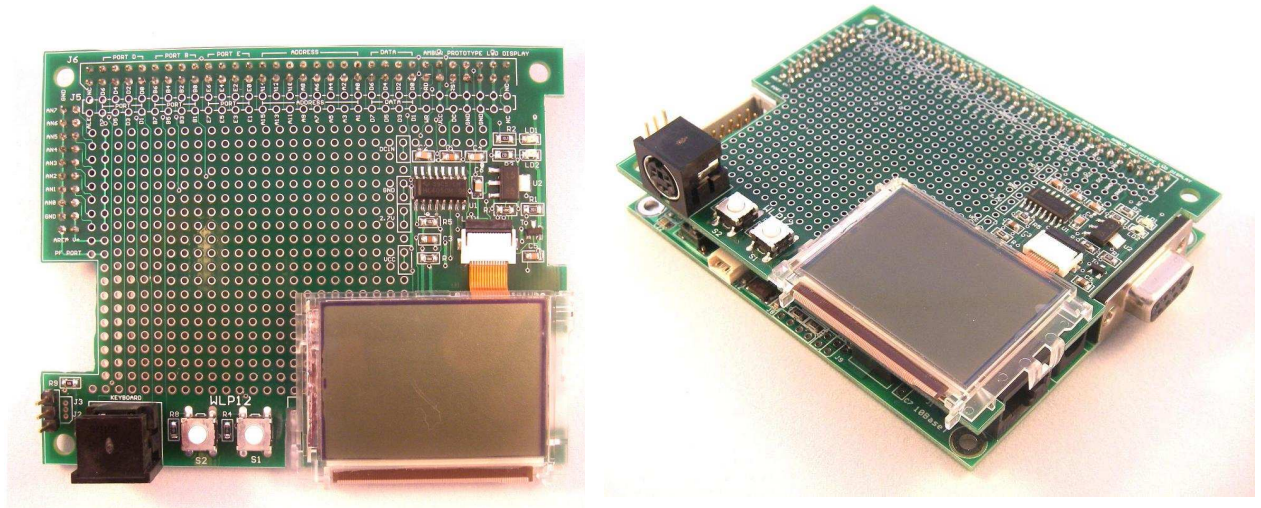


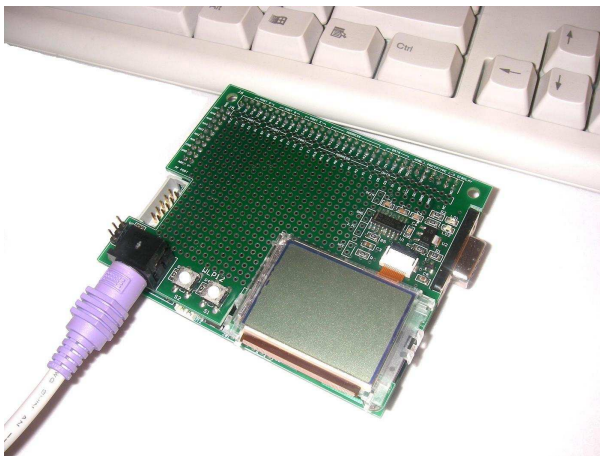
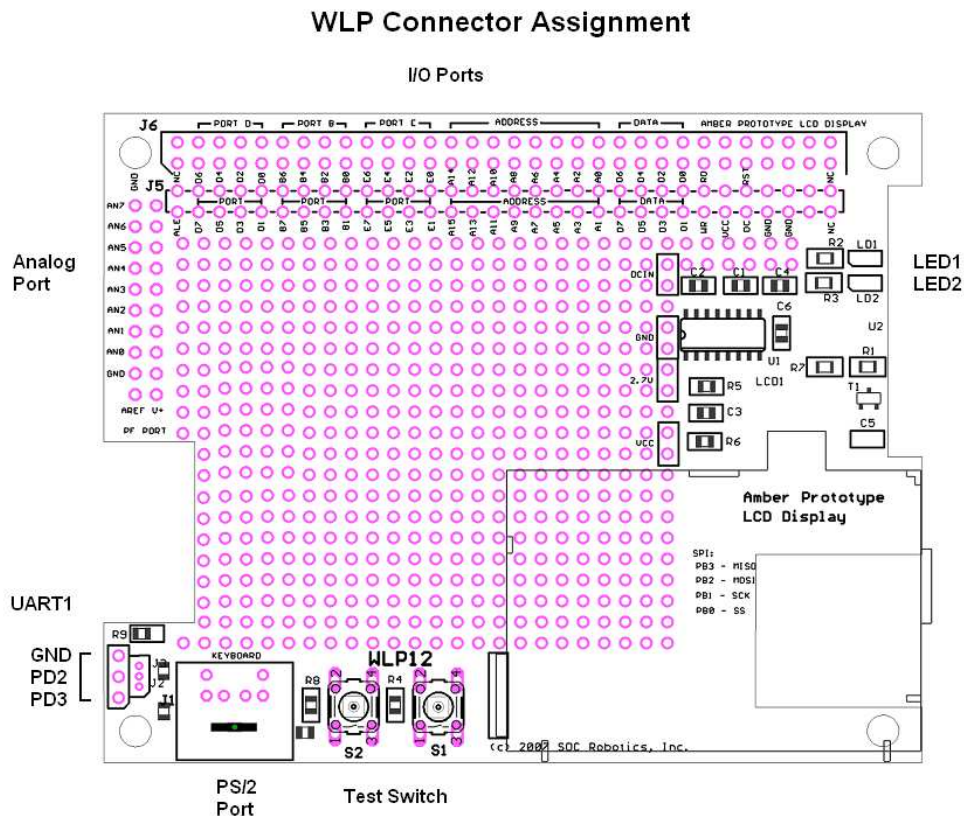
## WLP12 Connector Assignment and Schematics

The WLP12 is a daughtercard that attaches to the Amber Web Server and provides a 4x12 monochrome LCD display and PS/2 compatible keyboard interface connector. The product is shipped with a sample application that provides a complete software interface to the LCD and keyboard. Project files compatible with the ImageCraft ICCAVR C IDE is included on the supplied CD.

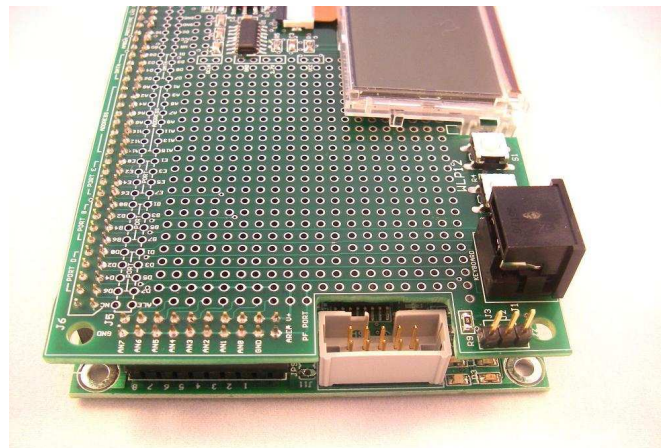


WLP functional components.

## WLP12 Connector Assignment and Schematics



Keyboard attached to WLP12



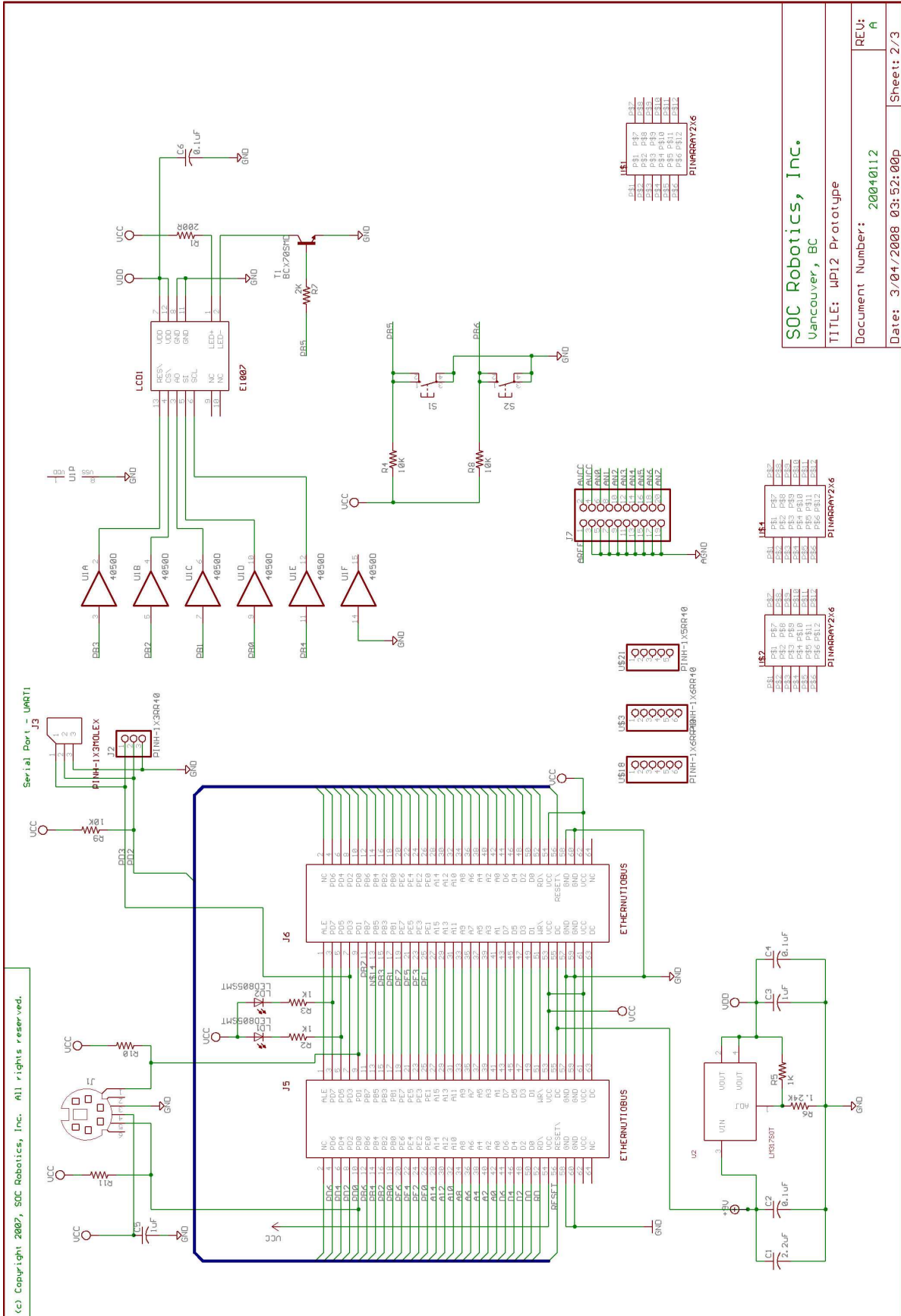
ISP Programming port

The included CD contains a folder with the required complete source code files to control the LCD and keyboard interface. The project files are a good starting point for your own application development.

(c) Copyright 2007, SOC Robotics, Inc. All rights reserved.	
WP12 Prototype and LCD Display	
Rev 1.0	
SOC Robotics, Inc. Vancouver, BC	
TITLE: WP12 Prototype	
Document Number:	20040112
REV:	A
Date:	3/04/2008 03:52:00p
Sheet: 1/3	



# WLP12 Connector Assignment and Schematics



SOC Robotics, Inc.

