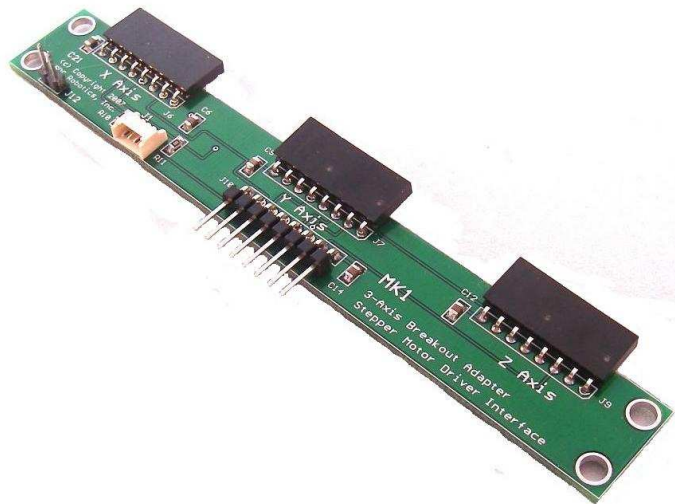


MK1 3-Axis Breakout Adapter

Technical Reference Guide

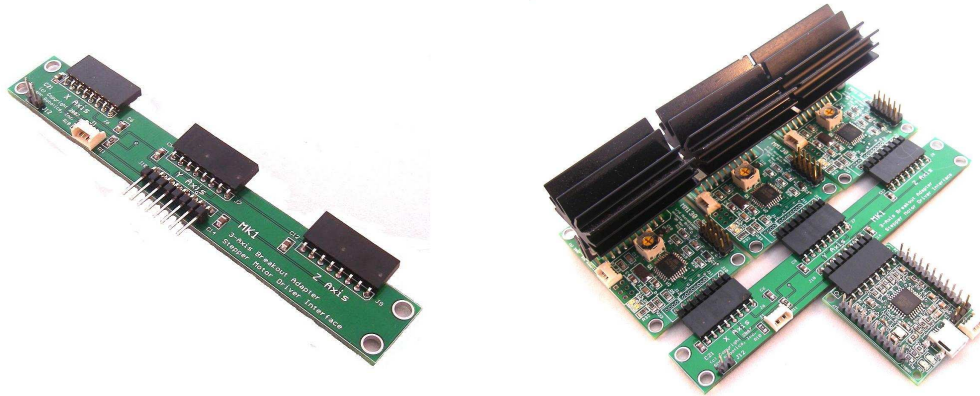
PCB Rev 1.0



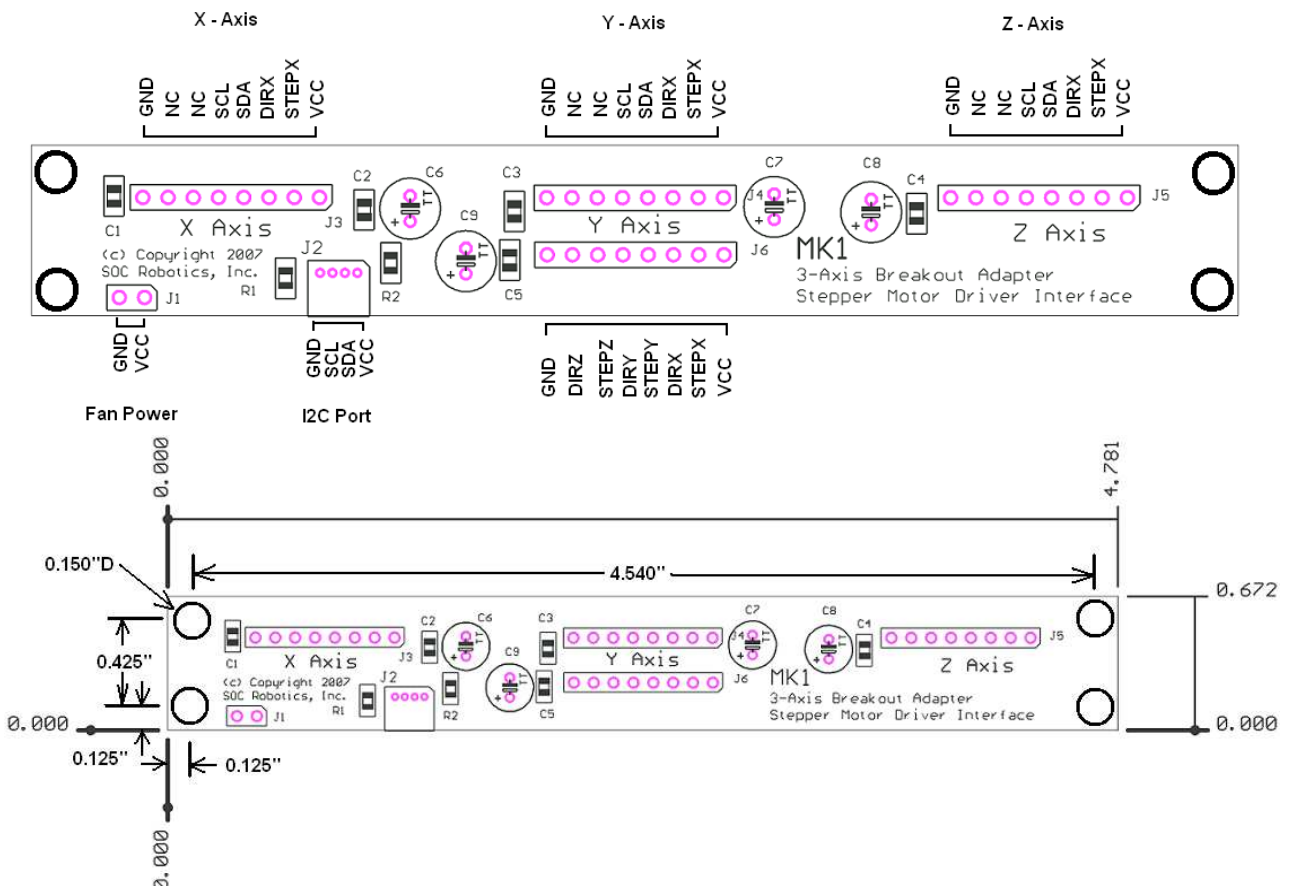
www.soc-machines.com

Overview

The **MK1** is a 3-Axis breakout adapter that connects three stepper motor driver boards such as the **MM130** to a controller such as the **USB10** or **WaspARM**. The adapter routes STEP and DIRECTION signals from a common connector to each of the three driver connectors. An I2C interface connector on the adapter is connected to the three driver boards. A USB10 can communicate with the driver boards via the I2C connector. A small header is also mounted on the board that can be used to supply 5VDC to a cooling fan.

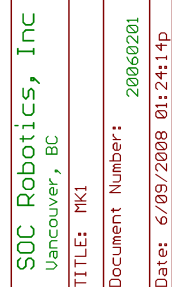


MK1 Connector Pin Assignment



MK1 Circuit Schematic

(c) Copyright 2008. SOC Robotics, Inc. All rights reserved.		MK1		3 Axis BreakOut Adapter		PCB Rev 1.0		SOC Robotics, Inc Vancouver, BC	
								TITLE: MK1	
								Document Number: 20080501	REV: A
								Date: 6/09/2008 01:24:14p	Sheet: 1/2



Notes: